

The GO team works with seniors, their families, community agencies and primary care physicians, contributing the often-missing mental health component.

For more information, please contact

**Melissa Smith at (336) 716-0690**  
or [melsmith@wfubmc.edu](mailto:melsmith@wfubmc.edu).

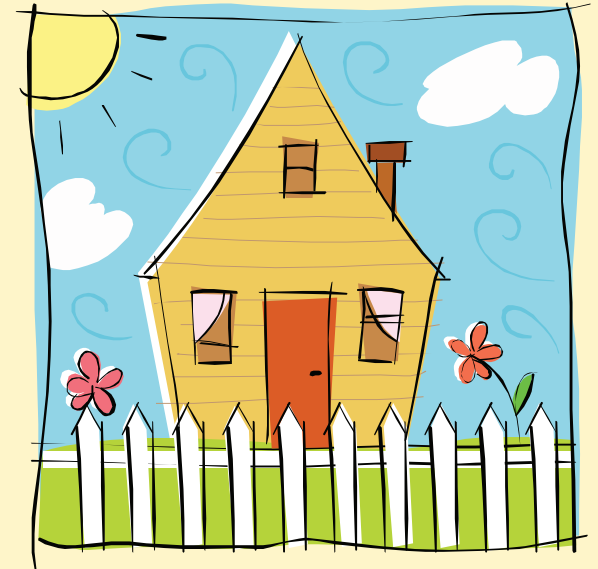


**WAKE FOREST**  
UNIVERSITY

SCHOOL of MEDICINE

**The Department of Psychiatry  
and Behavioral Medicine**  
Medical Center Boulevard  
Winston-Salem, NC 27157

THE KATE MILLS SNIDER  
GERIATRIC PSYCHIATRY  
OUTREACH PROGRAM



The  
**“GO” Program**  
for  
**Homebound**  
**Seniors**

The **Geripsychiatric Outreach** or **GO Program**, established in 2005, is a collaborative outreach service that brings mental health care to seniors who need it at home. GO team members are physicians and other health care professionals specializing in geriatric mental health.

Seniors with chronic illnesses and mobility problems frequently also suffer from depression, anxiety, and similar complications that can make it harder for them to recover. Many of these complications are treatable. However, it can be difficult for many seniors to get the care they need, for various reasons. Often they just can't physically get to yet another doctor's office.

## Who the "GO" Program Serves

Homebound elders, age 65 and older, who need non-emergency mental health care in the home setting—this does not include assisted living or nursing home facilities.

The GO Team partners with caregivers, referring agencies and physicians, who remain actively involved in the care of the patient and support of the family.

**If the patient is in imminent danger to himself or others, call 911.**  
The GO program is not intended for emergency situations.



Kate Mills Snider at home.

The GO program is able to bring mental health care to homebound elders thanks to a generous gift from the Snider family of Salisbury, NC, in honor of Kate Mills Snider, after whom it is named.

