

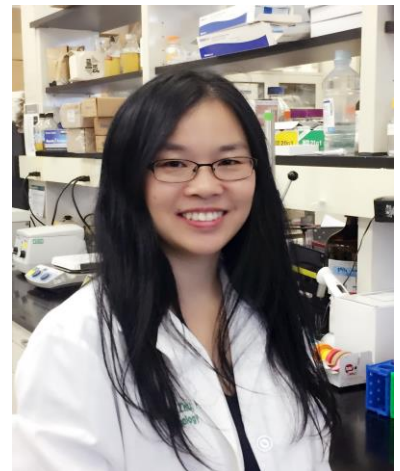
Center on Diabetes, Obesity and Metabolism Seminar Series Presents:

Lipid and Glucose Metabolism, Macrophage Inflammation and Metabolic Disease

Xuwei Zhu, Ph.D.

Assistant Professor of Internal Medicine, Molecular Medicine

Dr. Zhu's research interest is to understand the mechanisms of pathogenesis of inflammatory disease, especially from the aspects of nutritional immunology. She has been fascinated by the elegantly integrated systems that have evolved to control lipid metabolism since her doctoral training. Recently, she has expended her research interest to study macrophage glucose metabolism. Currently, Dr. Zhu's lab focuses on studying how macronutrients (including cholesterol, fatty acids and glucose) regulate macrophage inflammation and inflammation-related metabolic diseases including obesity, type 2 diabetes and atherosclerosis.



Monday, October 16, 2017

4:00 – 5:00 p.m.

Comprehensive Cancer Center, 10th floor, Room 10B