

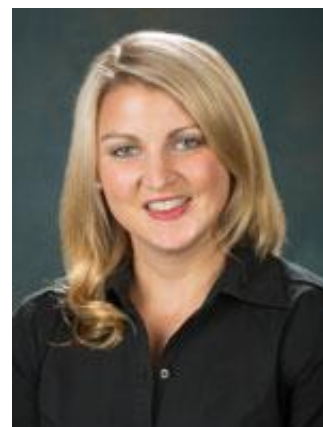
**Center on Diabetes, Obesity and Metabolism
and Brenner FIT Present:**

Parent-Child and Family Dynamics among Bariatric Surgery Patients

Keeley J. Pratt, PhD

**Assistant Professor, Department of Human Sciences and College of
Human Ecology, The Ohio State University**

Dr. Pratt works with Pediatric Obesity Treatment Centers, residential Healthy Lifestyle Camps, adult weight management and bariatric surgery, and school-based settings as a therapist and researcher. Her research focuses on: 1) family factors that contribute to or are modifiable in child and adult weight management and bariatric surgery, 2) family-based and multidisciplinary weight management treatment models, and 3) expanding mental and behavioral health training to include weight bias. Dr. Pratt has received funding for her work and has conducted over 100 presentations at local, national, and international conferences and has produced over 30 peer reviewed works relevant to her research interests.



Friday, April 21, 2017

12:00 – 1:00 p.m.

525@Vine, Building 90, Conference Room 4001

 **Wake Forest[®]**
School of Medicine