

ANNUAL REPORT 2015-2016

COY C CARPENTER LIBRARY & ARCHIVES

The Carpenter Library continues to support the educational, research, and clinical wings of the Wake Forest Medical Center by providing instruction, support of research publishing, and access to resources.

ANNUAL REPORT

2015-2016

COY C CARPENTER LIBRARY & ARCHIVES

INSTRUCTION

Instruction and technical assistance was provided to the following medical center departments:

- Lync online meetings – Ambulatory
- PPT – Emeritus
- Word formatting references – BRSA
- Word brochure – Epilepsy Information Center
- OneNote – NW Community Care
- Prepared Classroom B and certified workstations for Cardiology Residents' 2-day exam

In addition to teaching classes, help desk assistance in Adobe Acrobat, Ektron, Excel, Image Editing and Outlook was provided to Medical Center personnel.

Zotero assistance was provided to faculty creating bibliographies in Zotero who needed the correct codes.

The lecture, "Copyright in the Classroom", to Physician Assistant Faculty at 525@Vine was simultaneously broadcast to the Physician Assistant faculty in Boone, NC.

Custom classes in Excel and Ektron were created for the Care Coordination department.

Technical assistance was provided to Reynolda campus users trying to get on the Medical Center's guest network with Macs.

A librarian trained several members of Faculty Affairs and the Office of Women in Medicine and Science to run Lync Online Meetings.

The Library hosted exams for Neurosurgery Residents, OB/Gyn Residents, Hem/Onc Fellows. Second-year med students are using Classroom A on a regular basis to take Step 1 practice exams.

New medical student orientation was held on July 29:

- Librarians team-taught with Dr. Suzanne Edmonds 2 sessions on information literacy to 120 medical students in preparation for their Case Centered Learning curriculum with an introduction to information retrieval, evaluation and management skills.
- Librarians toured 120 new medical students. Students were given information about printing, an introduction to the electronic textbooks database and to Exam Master.

Librarians oriented 30 new graduate students to the resources available to them and they were toured through the physical Library as well.

INSTRUCTION COMMENTS

"I am now better able to navigate the Excel spreadsheets and the handout will also help me work with it until I become more familiar"

"I learned several shortcuts that will help me with my spreadsheets"

"I learned how to create forms that I can use for recording the results of an instrument calibration or modifying an outdated audit form"

"How to create/edit my department's intranet site"

"How to edit and manage the external website"

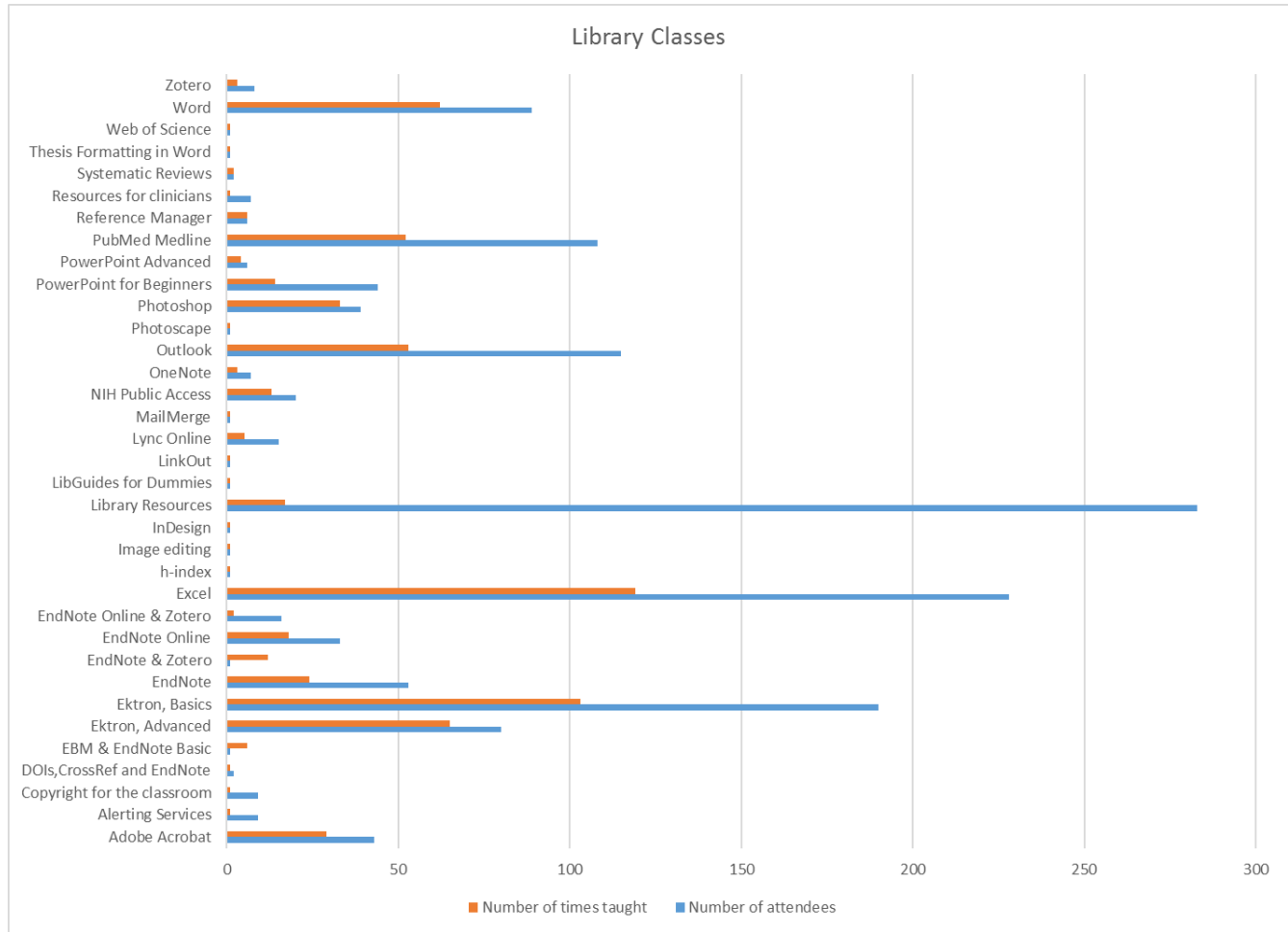
"I have been using PubMed for years but this class has taught me to use it more efficiently"

"I've never used EndNote, so I really learned a lot...I learned how to create a database, how to add references, and how to create a bibliography"

"Linking MyNCBI Bibliography to eRA Commons ... how to see if papers have a PMID or PMCID and what the difference is, compliant vs non-compliant"



Library Resources were demonstrated to 23 new Nurse Anesthesia students.



The Library purchased subscriptions to the LibGuide products which allows the Library to create content-rich web pages targeted to specific audiences. Curricula content pages were created for the [MD program](#), the [PA program](#), and the [Nurse Anesthesia program](#). Other LibGuides, designed to supplement currently offered Library classes, include: [EndNote](#), [Evidence-Based Practice](#), [Microsoft Office: Outlook 2010](#), and [NIH Public Access Compliance](#).

Librarians create and execute literature searches for clinical and research personnel. We have provided 170 literature searches for 27 departments on specific clinical topics that advanced the delivery of care in this Medical Center over the last year:

- | | |
|---------------------------------|------------------------|
| Anesthesiology | Neurology |
| Bioinformatics | Nursing |
| Brenner Critical Care Transport | Obstetrics/Gynecology |
| Cardiology | Pastoral Care |
| Carolinas Pain Institute | Pediatrics |
| Clinical Nutrition Services | Public Health Sciences |
| CTSI-BRSA | Physical Therapy |
| Downtown Health Plaza | Psychiatry |
| Emergency Department | Radiation Oncology |
| Family Medicine | Radiology |
| Geriatrics | Urology |
| Hematology/Oncology | Weight Management |
| Infectious Diseases | Wellness |
| Internal Medicine | |

Acquisitions

The Library purchased a license for the Bates Physical Examination streaming video product this year and a complete set of the McGraw Hill First Aid series online.

In preparation for the opening of the new medical education campus in Innovation Quarter downtown, a list of 450 core undergraduate medical education textbooks supporting the curricula of MD students, PA and Nurse Anesthesia students was prepared. The list was then forwarded to the curricula course directors by Medical Education.

In response to the student survey and a suggestion from the LCME committee, we added approximately 315 books to the collection. These book acquisitions are mainly multiple copies of study guides. The list was developed as a specific result of the student's survey for the LCME.

The Library purchased [Lippincott Williams & Wilkins \(LWW\) Health Library](#). This resource contains over forty E-textbooks on anatomy, physical examination, genetics, epidemiology, etc. It will support the first and second year MD curriculum as well as the PA curriculum providing additional online resources for study.

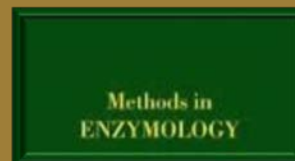
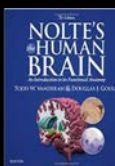
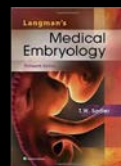
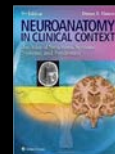
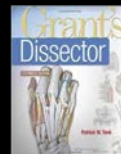
We installed SAS-JMP Statistical Analysis software in both classrooms for Internal Medicine training and on two public scanning stations.

Cancellations 2016

APMIS
Clinical Otolaryngology
Functional Neurology (online Open Access (OA))
Internal Medicine Journal
Journal of Child and Adolescent Psychopharmacology
Journal of Continuing Education in Nursing (access via ProQuest)
Journal of Family Practice
Paediatric and Perinatal Epidemiology
Sexually Transmitted Infections
Vox Sanguinis

HIGHLIGHTED ACQUISITIONS

BATES' VISUAL GUIDE TO Physical Examination



Springer Protocols

Faculty Publications

MULTIDEPARTMENTAL PUBLICATIONS ACTIVITY FISCAL YEAR 2016: BOOKS AND CHAPTERS

Division of Radiologic Science

- 4 Internal Medicine
- 2 Radiation Oncology
- 6 Translational Science Institute

Emergency Medicine

- 1 Anesthesiology

Internal Medicine

- 1 Obstetrics and Gynecology

Pathology

- 2 Graduate Program
- 1 Physiology Pharmacology

Public Health Sciences

- 1 Surgery

FY 2016 Multidepartmental Books and Chapters Activity Total: 18

MULTIDEPARTMENTAL PUBLICATIONS ACTIVITY FISCAL YEAR 2016: JOURNAL ARTICLES

Anesthesiology

- 3 Internal Medicine
- 4 Physiology and Pharmacology
- 1 Public Health Sciences, Division of
- 4 Surgical Sciences, Division of
- 1 Translational Science Institute

Biochemistry

- 1 Biomedical Engineering
- 3 Cancer Biology
- 4 Center for Genomics and Personalized Medicine
- 3 Graduate Program
- 11 Internal Medicine
- 2 Microbiology and Immunology
- 1 Pathology
- 2 Physiology and Pharmacology
- 1 Psychiatry and Behavioral Medicine
- 9 Public Health Sciences, Division of
- 4 Radiologic Sciences, Division of

Biomedical Engineering

- 1 Graduate Program
- 2 Internal Medicine
- 1 Public Health Sciences, Division of
- 6 Surgical Sciences, Division of

Cancer Biology

- 3 Biochemistry
- 1 Graduate Program
- 2 Internal Medicine
- 1 Neurobiology and Anatomy
- 5 Pathology
- 2 Public Health Sciences, Division of
- 3 Radiologic Science, Division of
- 2 Radiation Oncology
- 2 Surgical Sciences, Division of
- 1 Translational Science Institute
- 1 WF Institute for Regenerative Medicine

Top Papers* from WFSM

Yeboah J, Young R, McClelland RL, Delaney JC, Polonsky TS, Dawood FZ, Blaha MJ, Miedema MD, Sibley CT, Carr JJ, Burke GL, Goff DC Jr, Psaty BM, Greenland P, Herrington DM.

Utility of Nontraditional Risk Markers in Atherosclerotic Cardiovascular Disease Risk Assessment.

J Am Coll Cardiol. 2016 Jan 19;67(2):139-47. doi: 10.1016/j.jacc.2015.10.058. PMID: 26791059 PMCID: PMC4724058

Levine GN, Bates ER, Blankenship JC, Bailey SR, Bittl JA, Cercek B, Chambers CE, Ellis SG, Guyton RA, Hollenberg SM, Khot UN, Lange RA, Mauri L, Mehran R, Moussa ID, Mukherjee D, Ting HH, O'Gara PT, Kushner FG, Ascheim DD, Brindis RG, Casey DE Jr, et al.

2015 ACC/AHA/SCAI Focused Update on Primary Percutaneous Coronary Intervention for Patients with ST-Elevation Myocardial Infarction: An Update of the 2011 ACCF/AHA/SCAI Guideline for Percutaneous Coronary Intervention and the 2013 ACCF/AHA Guideline for the Management of ST-Elevation Myocardial Infarction

Circulation. 2016 Mar 15;133(11):1135-47. doi: 10.1161/CIR.0000000000000336. Erratum in: *Circulation.* 2016 Mar 15;133(11):e442-3. PMID: 26490017

Center for Cancer Genomics

- 1 Center for Genomics and Personalized Medicine Research
- 1 Public Health Sciences

Center for Genomics and Personalized Medicine Research

- 2 Biochemistry
- 1 Center for Cancer Genomics
- 4 Internal Medicine
- 3 Pediatrics
- 3 Public Health Sciences, Division of
- 1 Translational Science Institute

Department of Physician Assistant Studies

- 1 Public Health Sciences

Dermatology

- 1 Biomedical Engineering
- 1 Family Medicine
- 1 Pediatrics
- 2 Public Health Sciences
- 2 Translational Science Institute

Emergency Medicine

- 1 Anesthesiology
- 1 Dermatology
- 1 Family Medicine
- 4 Internal Medicine
- 1 Neurology
- 1 Obstetrics and Gynecology
- 5 Public Health Sciences, Division of
- 1 Radiologic Science, Division of
- 2 Surgical Sciences, Division of

Family and Community Medicine

- 2 Center for Genomics and Personalized Medicine Research
- 1 Internal Medicine
- 1 Neurology
- 13 Public Health Sciences, Division of
- 3 Radiologic Science, Division of
- 2 Translational Science Institute
- 1 WF Institute for Regenerative Medicine

Internal Medicine

- 3 Anesthesiology
- 21 Biochemistry
- 4 Biomedical Engineering
- 2 Cancer Biology
- 15 Center for Genomics and Personalized Medicine Research
- 1 Department of Physician Assistant Studies
- 1 Family Medicine
- 1 Microbiology and Immunology
- 3 Obstetrics and Gynecology
- 2 Neurology
- 9 Pathology
- 1 Pediatrics
- 4 Physiology and Pharmacology
- 3 Psychiatry and Behavioral Medicine
- 54 Public Health Sciences, Division of
- 2 Radiation Oncology
- 2 Radiologic Science, Division of
- 9 Surgical Sciences, Division of
- 1 WF Institute for Regenerative Medicine

Microbiology and Immunology

- 1 Biochemistry
- 1 Pathology

Kapural L, Yu C, Doust MW, Gliner BE, Vallejo R, Sitzman BT, Amirdelfan K, Morgan DM, Brown LL, Yearwood TL, Bundschu R, Burton AW, Yang T, Benjamin R, Burgher AH.

[Novel 10-kHz High-frequency Therapy \(HF10 Therapy\) Is Superior to Traditional Low-frequency Spinal Cord Stimulation for the Treatment of Chronic Back and Leg Pain: The SENZA-RCT Randomized Controlled Trial.](#)

Anesthesiology. 2015 Oct;123(4):851-60. doi: 10.1097/ALN.0000000000000774. PMID: 26218762

* InCites™ Essential Science Indicators. Clarivate Analytics/Web of Science, 2016.

Neurobiology and Anatomy

- 1 Anesthesiology
- 1 Biomedical Engineering
- 1 Medical Education
- 1 Neurology
- 1 Pathology
- 2 Physiology and Pharmacology
- 1 Radiologic Science, Division of

Neurology

- 1 Dermatology
- 1 Family Medicine
- 3 Internal Medicine
- 1 Pediatrics
- 7 Public Health Sciences, Division of
- 1 Radiologic Science, Division of
- 2 Surgical Sciences, Division of
- 3 Translational Science Institute
- 1 WF Institute for Regenerative Medicine

Obstetrics and Gynecology

- 1 Cancer Biology
- 1 Pediatrics
- 2 Public Health Sciences
- 2 Surgical Sciences, Division of
- 1 Translational Science Institute

Pathology

- 2 Administration
- 2 Cancer Biology
- 1 Center for Genomics and Personalized Medicine Research
- 2 Graduate Program
- 3 Internal Medicine
- 2 Physiology and Pharmacology
- 3 Public Health Sciences
- 1 Radiation Oncology
- 1 Surgical Sciences, Division of
- 1 Translational Science Institute

Pediatrics

- 1 Family Medicine
- 1 Internal Medicine
- 1 Neurology
- 1 Obstetrics and Gynecology
- 1 Pathology
- 1 Psychiatry and Behavioral Medicine
- 2 Public Health Sciences, Division of
- 1 Radiologic Science, Division of
- 2 Surgical Sciences, Division of
- 1 Translational Science Institute

Physiology and Pharmacology

- 3 Anesthesiology
- 2 Biochemistry
- 3 Biomedical Engineering
- 1 Center for Genomics and Personalized Medicine Research
- 2 Internal Medicine
- 3 Pathology
- 1 Public Health Sciences, Division of

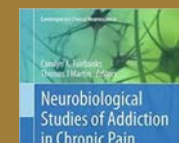
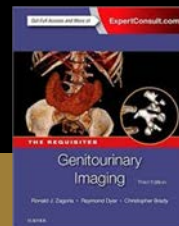
Psychiatry and Behavioral Medicine

- 2 Internal Medicine
- 2 Public Health Sciences

Public Health Sciences, Division of

- 2 Biochemistry
- 2 Center for Genomics and Personalized Medicine Research
- 1 Dermatology
- 14 Family and Community Medicine
- 39 Internal Medicine
- 2 Neurology

Books Published 2015-16



Public Health Sciences, Division of (continued)

- 1 Pathology
- 1 Pediatrics
- 6 Psychiatry and Behavioral Medicine
- 5 Radiologic Science, Division of
- 4 Surgical Sciences, Division of
- 2 Translational Science Institute
- 1 WF Institute for Regenerative Medicine

Radiation Oncology

- 1 Biomedical Engineering
- 3 Cancer Biology
- 1 Center for Genomics and Personalized Medicine Research
- 1 Graduate Program
- 6 Internal Medicine
- 1 Pediatrics
- 3 Public Health Sciences, Division of
- 1 Radiologic Science, Division of
- 6 Surgical Sciences, Division of

Radiologic Science, Division of

- 1 Biochemistry
- 2 Biomedical Engineering
- 2 Cancer Biology
- 2 Center for Genomics and Personalized Medicine Research
- 2 Family Medicine
- 6 Internal Medicine
- 1 Neurology
- 1 Pathology
- 1 Pediatrics
- 2 Physiology and Pharmacology
- 1 Psychiatry and Behavioral Sciences
- 4 Public Health Sciences, Division of
- 8 Radiation Oncology
- 10 Surgical Sciences, Division of
- 12 Translational Science Institute

Surgical Sciences, Division of

- 3 Anesthesiology
- 5 Biomedical Engineering
- 2 Cancer Biology
- 2 Emergency Medicine
- 1 Graduate Program
- 10 Internal Medicine
- 3 Neurobiology and Anatomy
- 5 Obstetrics and Gynecology
- 8 Pathology
- 1 Pediatrics
- 2 Physiology and Pharmacology
- 15 Public Health Sciences, Division of
- 3 Radiation Oncology
- 2 Radiologic Science, Division of
- 11 Translational Science Institute
- 4 WF Institute for Regenerative Medicine

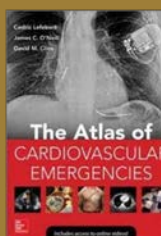
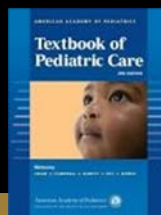
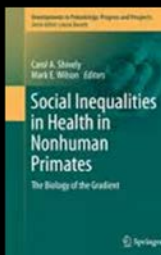
Translational Science Institute

- 1 Public Health Sciences
- 1 Radiologic Science, Division of

WF Institute for Regenerative Medicine

- 2 Biomedical Research
- 1 Internal Medicine
- 1 Neurology
- 1 Pathology
- 2 Pediatrics
- 1 Radiologic Science, Division of
- 7 Surgical Sciences, Division of

FY 2016 Multidepartmental Journal Articles Activity Total: 627

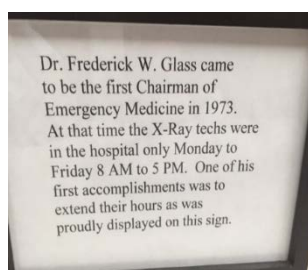
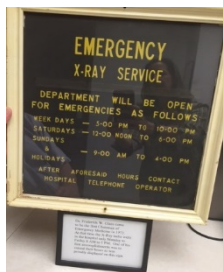
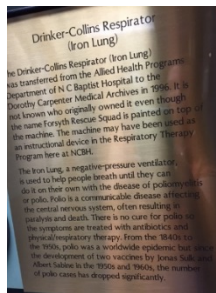


Fiscal Year 2016 Medical School Publications by Department

Department	Books	Journal Articles	Chapters	Abstracts	Misc.	Total
Administration		2				2
Anesthesiology		37	10	64	16	127
Biochemistry		29		4		33
Biomedical Engineering		21		7		28
Cancer Biology		56		10	1	67
Center for Cancer Genomics		1				1
Center for Genomics and Personalized Medicine Research		32		9		41
Clinical and Translational Science Institute		1				1
Dentistry		1				1
Dermatology		48		20	21	89
Emergency Department	2	25	5	1	7	40
Family and Community Medicine		26			3	29
Internal Medicine	2	293	4	126	45	470
Microbiology and Immunology		4		1		5
Neurobiology and Anatomy		22	3	14	4	43
Neurology		46		10	6	62
Obstetrics and Gynecology		35	1	28	3	67
Pathology	1	44	2	12	2	61
Pediatrics	1	49	7	7	7	71
Physical Medicine & Rehabilitation		1				1
Physician Assistant Studies		5		5	13	23
Physiology and Pharmacology		39		16	1	56
Psychiatry and Behavioral Medicine		11		1	4	16
Public Health Sciences, Division of	1	308	8	48	14	379
Radiation Oncology		19		12		31
Radiologic Sciences, Division of	2	61	94	9	21	187
Surgical Sciences, Division of		208	4	82	18	312
Wake Forest Institute for Regenerative Medicine	1	84	6	49	13	153
Totals	10	1508	144	535	199	2396

Dorothy Carpenter Medical Archives

- Collections from:
 - American Medical Illustrators (AMI)
 - American Neurological Association (ANA)
 - American Society of Neurologists (ASN)
 - Society of Neurological Surgeons (SNS)
 were relocated to the home offices of the respective organizations
- All archives collections are now cataloged within Voyager
- Updated webpages:
 - [Transcripts](#)
 - [Fine Art](#)
 - [Nursing](#)
- Created Libguides for:
 - [MyWakeHealth](#)
 - [NCBH School of Nursing and other defunct programs transcripts](#)
- Presented poster on the MyWakeHealth initiative to the Mid-Atlantic chapter of the Medical Library Association (MAC-MLA):



Archives Statistics

Public Services

162 reference questions
[archival collections accessed 147 times]

76 WFSM staff

39 Community

18 NCBH alumni

5 NCBH staff

4 WFSM medical students

4 Association of Medical Illustrators

1 WFSM alumnus

Acquisitions

1.WFSM diploma from Nicholas Sparks movie *The Choice*; added to Student Affairs collection

2.Dr. McCreight's grade books; added to Student Affairs

3.Winston-Salem Architectural History, book by Heather Fearnbach; added to CCCL Voyager

4.Dr. Walter Bo's bow tie; added to Walter Bo collection

5.Match Day 2016 items like pom poms, letter, postcard; added to Student Affairs

STATISTICS 2015-2016

LIBRARY COLLECTION (Volumes)

Books 24,293	Serials 114,384	Audiovisuals 631	Microforms 1,582	Software 480
------------------------	---------------------------	----------------------------	----------------------------	------------------------

Total Library Collection: **141,408**

PERIODICALS & SERIALS SUBSCRIPTIONS

(includes electronic subscriptions): **5,735**

COLLECTION USE

Page views : **4,787,371** Full text downloads **1,987,098**
(includes print circulation)

PHYSICAL GATE COUNT
(the number of persons counted entering or leaving the Library)
114,773

ELECTRONIC GATE COUNT
(the number of persons counted entering the Library's Web site)
948,304

INFORMATION DESK STATISTICS

Reference Questions = 5,540	Photocopier Use: No. of Copies/Printouts = 1,697,171
Directional Questions = 3,369	Study Room Uses <i>(number of hours booked)</i> = 5,934
Librarian-Mediated Searches = 170	

DOCUMENT DELIVERY STATISTICS

Photocopy Requests 2,604	Photocopier Use (number of copies) 60,856
------------------------------------	---

INTERLIBRARY LOAN TRANSACTIONS

Borrowed 749
Loaned 4,512

LIBRARY QUARTERS

Total Square Feet, Net
32,108

Number of Network Connections
147

Total Seating Capacity
254

Number of Wireless Hubs
10

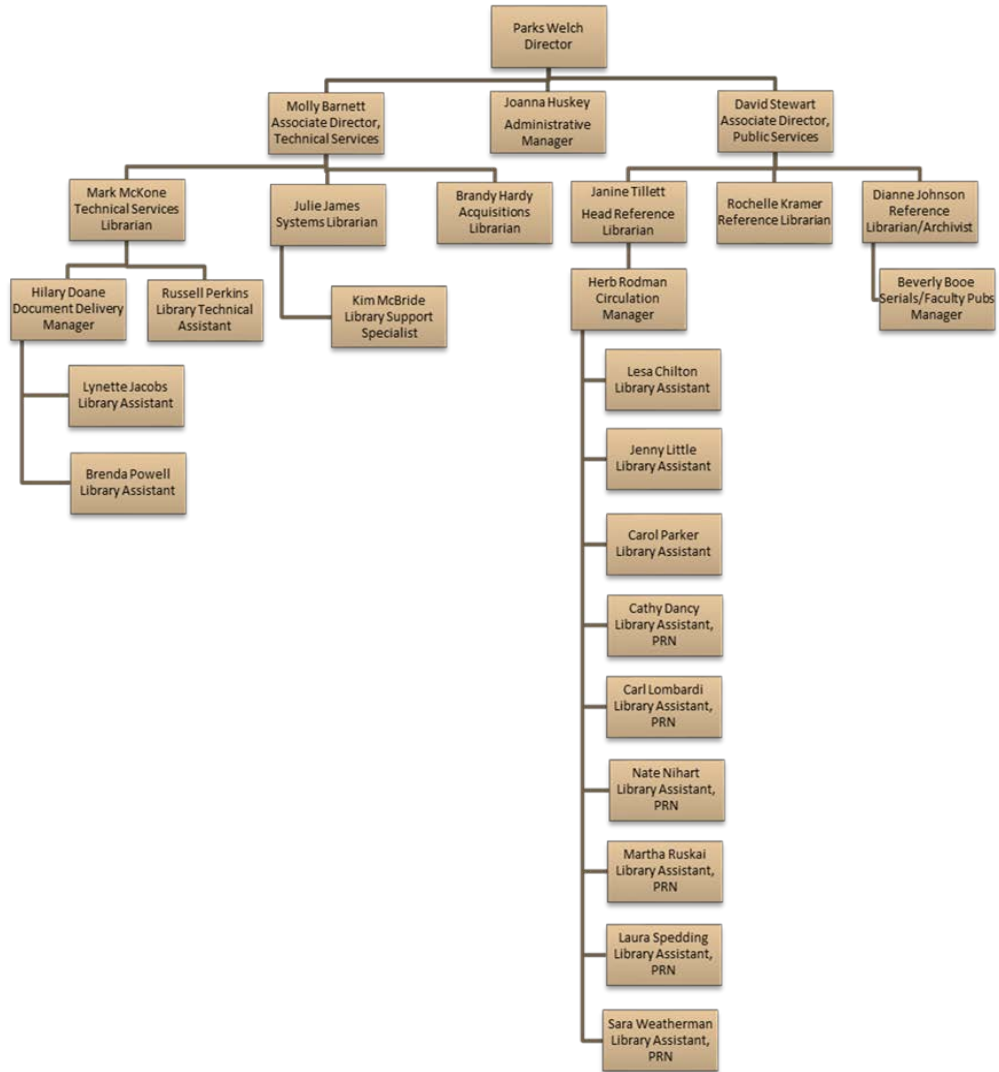
Number of study seating
(*reading, lounge, carrels,*)
154

Number of Public Workstations
53

Number of Chairs
251

Gray Collection Volume Capacity
159,220
Piedmont Collection Volume Capacity
36,000
Total Volume Capacity
195,220

Organizational Chart



STAFF ROSTER

ADMINISTRATION

<i>Name</i>	<i>Library Position</i>
Welch, Parks	Director
Huskey, Joanna	Administrative Manager

LIBRARIANS

<i>Name</i>	<i>Library Position</i>
Barnett, Molly	Associate Director, Technical Services
James, Julie	Systems Librarian
Johnson, Dianne	Archivist
Hardy, Brandy	Collection Development/Serials Librarian
Kramer, Rochelle (.75 FTE)	Reference Librarian
McKone, Mark	Technical Services Librarian
Stewart, David	Associate Director, Public Services
Tillett, Janine	Head Reference Librarian

STAFF

<i>Name</i>	<i>Library Position</i>
Booe, Beverly	Serials/Bindery Manager
Chilton, Lesa	Library Assistant II
Dancy, Cathy	PRN [work as needed]
Doane, Hilary	Library Technical Assistant
Jacobs, Lynette	Library Assistant II
Little, Virginia	Library Assistant II
Lombardi, Carl	PRN [work as needed]
McBride, Kim (.75 FTE)	Computer Support Technician
Parker, Carol (.8 FTE)	Library Assistant II
Perkins, Russell	Cataloging Assistant
Powell, Brenda (.93 FTE)	Library Assistant II
Rodman, Herbert	Circ/LRC Manager
Weatherman, Sara	PRN [work as needed]

RETIREMENTS

<i>Name</i>	<i>Library Position</i>	<i>Retirement Date</i>
Steelman, Helen	Library Assistant II	July 14, 2015